

AURORA RECTANGLE BACKLIT MIRROR

Assembly Instructions

PACK INCLUSIONS:



Mirror
1 pc



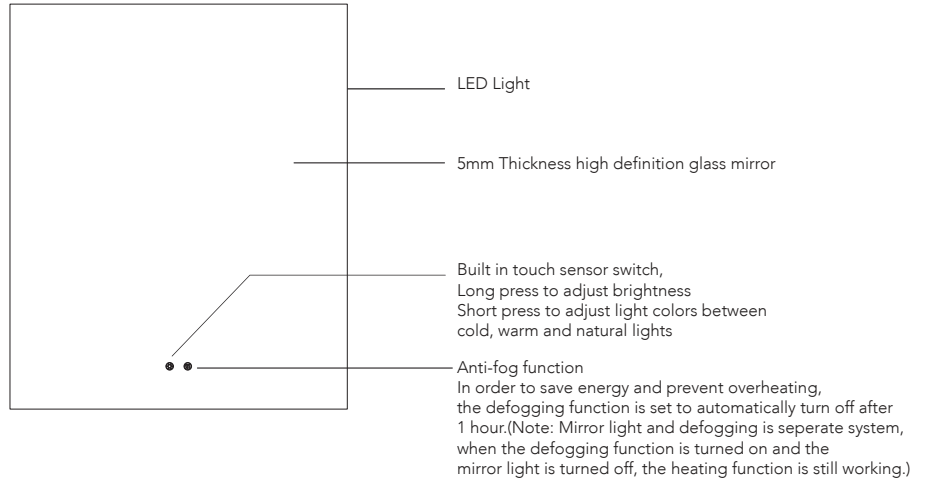
Screws 2 pcs
Rawl plug 2 pcs



Hanging strip
1 pc

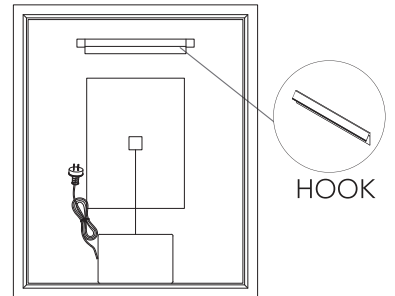
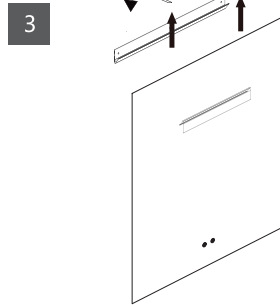
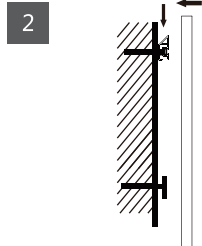
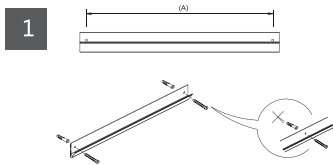


Instruction
Manual



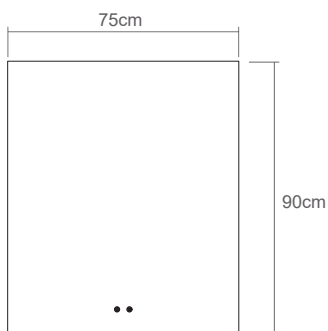
INSTRUCTIONS FOR INSTALLATION:

1. Prepare tape measure, electric drill, hammer, screwdriver, pliers.
2. On a strong wall, confirm the appropriate height and draw two punctuation points.
3. Drill holes in the marked up points, about 3cm deep and insert the rawl plugs and ensure they sit 2cm out of the wall.
Insert the screws into the two holes of the hanging strip and tighten the screws into the rawl plugs until the hanging strip is securely on the wall
4. Pick up the product with both hands and place it on the hanging strip from the hook on the back of the product.



SPECIFICATIONS

Front Illuminated arch mirror
Material - Aluminium+Glass
LED Color Temperature - 3500-6500K
Power Supply - AC 220-240V
Net Weight - KG
Product Size - 75X90cm
Made in China.



WARNING:

- Please read the instruction carefully before using.
- Do not disassemble or refit the products.
- Handle with care during installation or moving
- Keep the mirror dry; moisture reduces the sensitivity of the product.
- Turn off the power before cleaning.
- The surface of the mirror should be cleaned with glass cleaner; make sure the mirror is completely dry before using.
- Keep out of reach of children.
- Turn off the power and avoid direct sunlight if not used or stored for long periods of time.
- Make sure that your charging device is adequate for the mirror voltage rating before using.
- Do not approach or put the product into the fire in case of fire or explosion.
- Stop using it immediately if abnormal condition occurs.